

spinsó



## Installation Guide (*Trial Edition*)

Step by step guide for download and installation



## Installation Guide

---

1.	<b>Index</b> .....	pg 2
2.	<b>Download &amp; Install</b> .....	pg 3
3.	<b>Login</b> .....	pg 6

# 2

## Download & Install

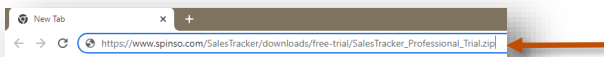
Installing SalesTracker Professional Trial is quiet easy. A simple setup wizard will guide you through the entire installation process. Follow these step by step instructions to help you install SalesTracker Professional Trial on your computer.



### Prerequisite

Operating system Windows Xp, Windows 7, 8, 8.1 or Windows 10

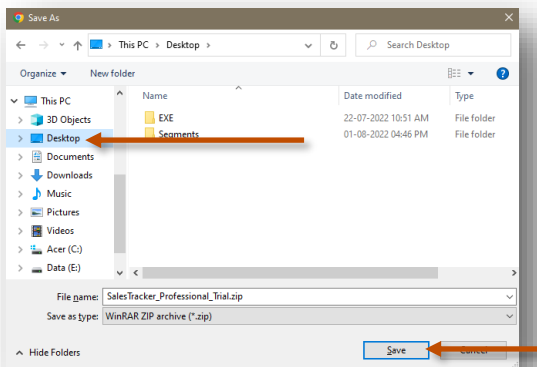
For windows Xp - Dot net 2.0 *free runtime from Microsoft is available on our website*



# 1

Download installer from our website

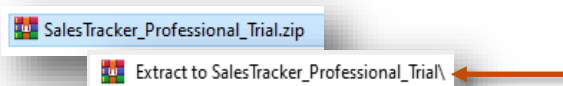
[https://www.spinso.com/SalesTracker/downloads/free-trial/SalesTracker\\_Professional\\_Trial.zip](https://www.spinso.com/SalesTracker/downloads/free-trial/SalesTracker_Professional_Trial.zip)



# 2

Select **Desktop** to save on our desktop

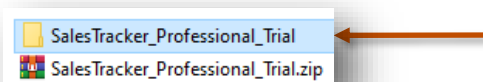
Click on **Save**



# 3

Extract Zip file

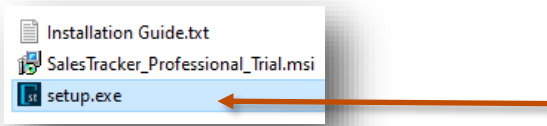
Right Click on zip file & Click **Extract to SalesTracker\_Professional\_Trial\'**



# 4

**SalesTracker\_Professional\_Trial** folder will be created on desktop.

Open the folder **SalesTracker\_Professional\_Trial**



5

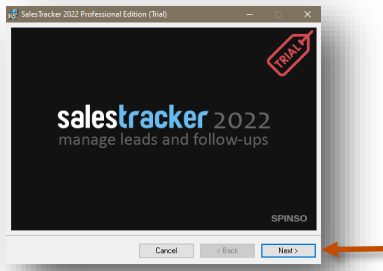
You would see the following files  
Run **Setup.exe** to install



Note : In case you are prompted for unknown publisher error  
Click on **More Info**  
Click on **Run anyway** to continue

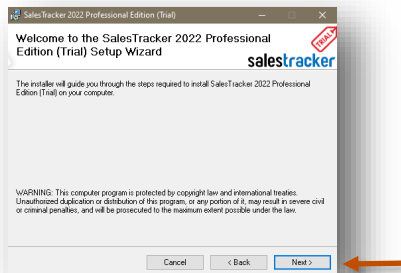


**Note**  
We **do not** recommend you to run Setup.exe directly from SalesTracker\_Professional\_Trial.zip file  
Please unzip the SalesTracker\_Professional\_Trial.zip file and run the setup from extracted folder



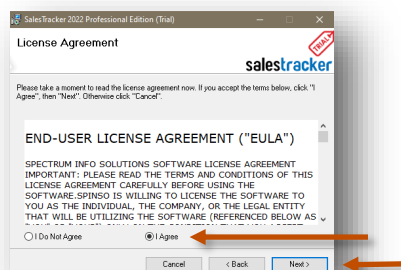
6

Click on **Next** button



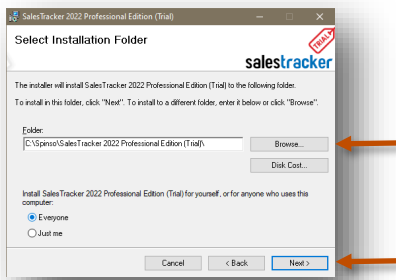
7

Click on **Next** button



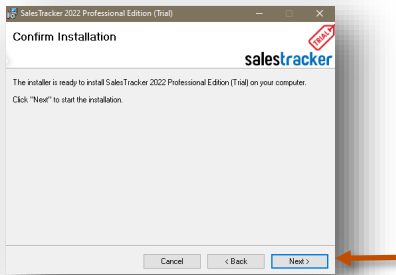
8

Select **I Agree**  
Click on **Next** button

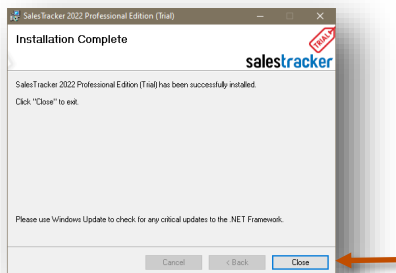


9 If you wish to change the installation path, Click on "**Browse**" and select the path for installation  
We would recommend default path

Click on **Next** button



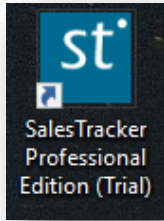
10 Click on **Next** button



11 Click on **Close** button

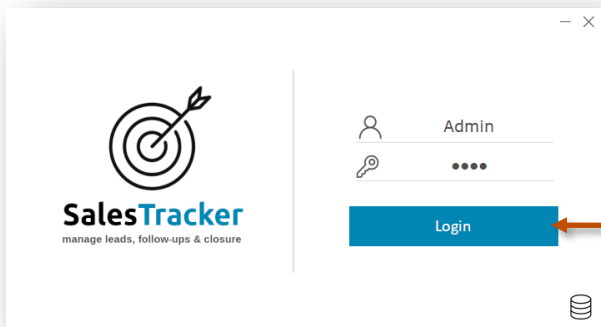
# 3

## Login



After you install SalesTracker you can click on the SalesTracker icon on your desktop to launch the application

You can also launch the application from **Start - Program Files - Spinso - SalesTracker**



In trial mode SalesTracker login screen would Open with default login name and password

### Default login details

Login Name : admin  
Password : demo



### Please note

You can change the password in **Master- Employee (user)** Screen  
Once you change the password Login screen will not load default login and password

Other software's

**servicedesk**  
Service CRM

**TimeTracker**  
Project Timesheet

**xplore**  
Digital catalog software

**spinso**

**Spinso**  
601, 6th Floor, Odyssey IT Park,  
Road No.9, Wagle Estate,  
Thane (W) - 400 604.  
Maharashtra, INDIA

[www.spinso.com](http://www.spinso.com)

[info@spinso.com](mailto:info@spinso.com)